

Attention:

- ◆ This appliance can be used by children aged from 8 years and above and persons with reduced physical, sensory or mental capabilities or lack of experience and knowledge if they have been given supervision or instruction concerning use of the appliance in a safe way and understand the hazards involved. Children shall not play with the appliance. Cleaning and user maintenance shall not be made by children without supervision.
- ◆ If the supply cord is damaged, it must be replaced by the manufacturer, its service agent or similarly qualified persons in order to avoid a hazard.



B-D02 Smart air purifier

Health series · desktop

Thank you for use this product which protected by intellectual property.

Please read this instruction manual carefully before
use and keep it for future use.

If the parameter, specification and other information maybe changed, we will not notice specially, please refer to the actual machine.
The "optional" are optional functions, please kindly check with the retailer if your machine with these functions.

Smart air purifier

Health series · desktop

Make an ecotypic home to avoid viruses

Environment self cicatrization

produces "air vitamin"

- It can generate 8, 000, 000 "air vitamin" every second which can improve the home environment.

Healthy air

Healthy air is the basis of health and life

- A child needs 400KG of air everyday, equal to 100 times of an adult needs water per day.
So it is very important to the health to improve the air environment of live.

DIRECTORY INDEX

CAUTIONS ----- 1-3

WARNING ----- 2

ATTENTION ----- 3

PRODUCT PERFORMANCE ----- 4

Product performance ----- 4

COMPONENT INTRODUCTION ----- 5-6

Diagram of the outlook ----- 5

Diagram of unit ----- 5

Screen diagram ----- 6

CAUTIONS BEFORE OPERATING ----- 7-8

Placement ----- 7

Disassembling filter cover ----- 7

Installation of the filters ----- 8

Power supply ----- 8

OPERATING INSTRUCTION ----- 9

Power setting ----- 9

Fan speed setting ----- 9

Filter replacement reminder ----- 9

MAINTENANCE AND
CLEANING INSTRUCTION ----- 10

FAQ ----- 11

TECHNICAL PARAMETERS ----- 12



Parameters of the unit ----- 12

Filter parameters ----- 12

CAUTIONS

In order to prevent harm or damage happened to users or others, be sure to comply with the requirement as below:

Warning/Attention

-  **Warning** It reminds that misusing or mishandling may cause death.
-  **Attention** It reminds that misusing or mishandling may cause hurt.



FORBID



FORCE

Kindly attention:

If the power wire is broken, to prevent danger happen, please send it to agent, after-sales service or technical person for repair.

CAUTIONS

WARNING

Please supervise your children and avoid them from touching or using machine.



Do not connect or disconnect the power with wet hand
It may cause electrical shocking.



AVOID WET

No disassembly, repair and reconstruction.
It may cause fire or damage.

Please send it to the retailer for repair.



NO DISASSEMBLE

Do not use the over run socket or wiring connector. Do use the rated voltage.

It may cause fire



FORBID

Do plug the power into the socket completely.

It may cause fire because of heating or electrical shocking.

Do not use the damaged plug or loose socket



Avoid any water on the surface of the unit.

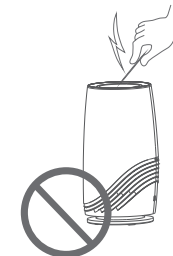
It may cause short circuit or electrical shocking.

The appliance must be disconnected from the supply mains before cleaning or other maintenance

Otherwise the unit may start working in a sudden which may cause electrical shocking or hurt.

Do not insert any metal objects into the unit.

It may cause hurt or electric shocking



FORBID

Do not repair it when the cord or plug is damaged..

It may cause short circuit, electric shocking or fire.

Please send it to the retailer for repair.



FORBID

If there is dust on the plug, it may weaken the insulation, even cause fire

Take out the plug and clean it with dry cloth.
Please remove the plug from the socket if not using for a long period.



Do clean the plug termly

ATTENTION

⚠ ATTENTION

Do not power the unit on when using insecticide in the room

Otherwise the insecticide may be stored in the unit and will blow out during the normal working time. It is harmful to the health.

Please ventilate completely after having used the insecticide before turn on the unit.



FORBID

Do not use in the room with lampblack such as kitchen.

It may cause hurt because the machine is not a ventilator



Do not blow in any combustible or fired cigarette into the unit.

It may cause fire



Do not use in the watery or high temperature room such as the bathroom etc.

Otherwise it may cause creepage, electric shocking or fire.



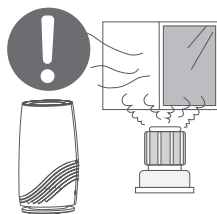
Keep away from alcohol, organic impregnant or insecticide

It may cause cracking, short circuit, electric shocking, hurt or fire



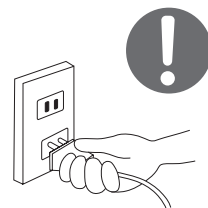
Please ventilate timely when used with fire in the room

Otherwise it may cause poisoning of CO, as the machine is not a ventilator



Please hold the plug instead of the cord when unplug the power.

Otherwise it may cause short circuit, breaking of the cord, electric shocking or fire.



Please remove the plug from the socket if any conditions as below:

- If all switches do not work
- If the power cord or plug hot singularly
- If any peculiar smell, exceptional noise or vibration
- Any other abnormality or failure

If the power cord is damaged, please send it to the retailer or service center or technician for repairing. Do not change or repair it by yourself.

PRODUCT PERFORMANCE

Product performance

- HEPA: using a new generation of composite materials, can effectively remove of particle .
- Activated carbon: adopting the porous coconut made by modern biological carbonization synthesis technology, adsorption capacity is bigger, and can effectively remove smoke, formaldehyde.
- Anion: negative ion is praised as Air Vitamin. People live in the high negative ionic environment, can promote human new and old superseded, improve immunity.

Professional quality. Technology innovation

Diagram of the outlook



Diagram of unit



Screen diagram



Placement

- Please keep the machine air inlet and outlet 30cm or more away from the wall and home furniture.
- Do not use the machine in front of heat source outlet.

Disassembling filter cover

- Disassembly diagram



Making the machine upside down,holding the unit with one hand,and twist it towards left by another hand.

- Installation diagram



Holding the unit with one hand,and twist it towards right by another hand,then the cover is installed well.

Installation of the filters

- Take off filter cover.
- Take out HEPA+carbon filter,tear off its PE bag and install it properly.



Take out filter



Install HEPA+carbon filter

Power supply

- DC voltage



Power cord hole



Power cord

Please don't connect this machine with wrong voltage of power supply, inserting the plug firmly into the power socket.

Power setting

- To press the “power”icon on the product operating panel ,machine is entered the initial working status. The diagram as following:



Fan speed setting

- After press the fan speed icon, the fan speed can be chosen between high(blue) and low(white)speed.



Filter replacement reminder

- When the filter is getting enough dirty, the power icon will be flashing in red. Please replace the new filter, and press the power icon for 5 seconds or more until you hear a sound"D" means reset successfully as following.



Maintenance and cleaning instruction

Maintenance and cleaning instruction



Please remove plug from the socket before cleaning and maintenance .

- Cleaning the body for this device by damp cloth, then wipe it dry.
- If machine is too dirty, neutral detergent can be used for cleaning, but please dilute the detergent before use.
- Do not clean the unit with the solvent listed on the right which may cause distortion or discolour.



- If the machine can't work properly,please kindly check as below before you send it out for repair.

Abnormal occurrence	Checking methods	Solution
Do not work	<ul style="list-style-type: none"> • Please check if the plug is disconnected from the socket. 	➡ Power plug should be plugged properly
Odor can not be removed.	<ul style="list-style-type: none"> • Is there a very strong odor in the using environment? (Notes:air should be purified continuously) 	➡ Suggesting to ventilate,then start up the machine.
	<ul style="list-style-type: none"> • Does the using life time for HEPA+activated carbon filter come to the end? 	➡ Please replace new filter.
High noise	<ul style="list-style-type: none"> • Is the PE bag for filter removed? 	➡ Please take out filter and tear off PE bag.
	<ul style="list-style-type: none"> • Does the using life time for HEPA+activated carbon filter come to the end? 	➡ Please replace new HEPA+activatd carbon filter
Small changes for humidity or temperature data	<ul style="list-style-type: none"> • Is the machine using area too big? 	➡ Please use this machine in applicable room.

If the problem is still existed after above inspections, please disconnect the power and send it for repair.

Parameters of the unit

Model No.:	B-D02
Voltage Supply:	DC 5V
Air flow volume(m³/h):	≥20m³/h
Noise level dB(A):	≤35dB(A)
Length of power cord:	≥1.5m
Product size:	115×115×209(mm)
Net weight:	0.7KG
Power rating (W):	3.5W
Applicable area:	8m²(86ft²)

Filter parameters

Description	Size	Life time
HEPA+activated carbon filter	Diameter 75 x Height 32.2mm	About 8 months